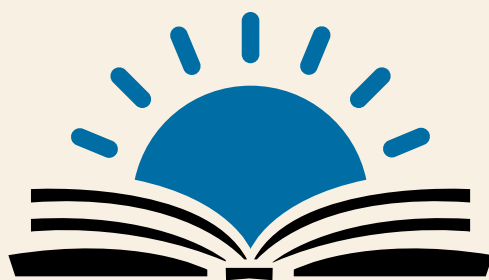


# Pearson Marang Education Trust



Supporting under-resourced and under-performing schools  
to become achieving schools

# School Support and Development Programme (SSDP)

---

Launched in 2008, the aim of the SSDP is to support the Department of Basic Education. The SSDP addresses the key challenges of capacity building at both district and school level. The SSDP seeks to significantly improve, develop and sustain: school leadership, curriculum implementation and management and learner results. The SSDP involves school-based support and workshops in: Mathematics, Developing Learning Skills Across the Curriculum and Leadership and Management.



**160**  
Schools



**3200**  
Teachers



**128 000**  
Learners

Value of donated resources:  
**R 6 000 000**

**8 Districts**

7 in former 'Homeland' areas



**7 Provinces**

North West, Limpopo, Gauteng,  
Mpumalange, KwaZulu-Natal,  
Eastern Cape & Western Cape

# District Partnership Programme (DPP)

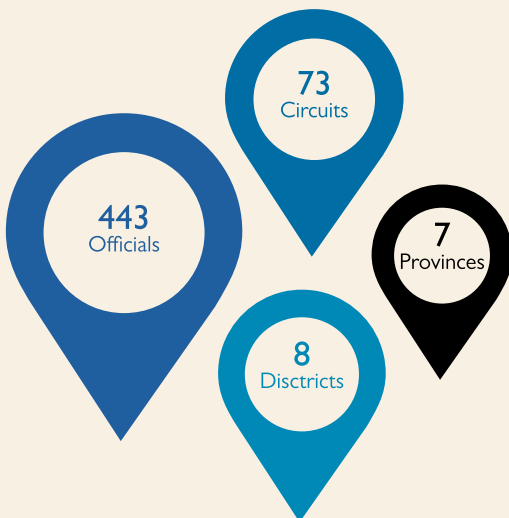
Launched in 2012, the DPP is an initiative that adopts a holistic approach towards school improvement. The DPP, capacitates district officials to enable under-performing schools to become steadily achieving schools capable of sustainable development. Through the mediation of existing Department of Basic Education policies, the DPP enables district officials together with school management teams and teachers to implement their roles and responsibilities with accountability.

The DPP also includes:

- Annual National Leadership and Exchange Seminar to foster professional networking between provinces
- Annual Provincial Symposium where district officials share their best practices

## Innovations we are proud of:

- The identification of seemingly obvious, yet overlooked contextual solutions to complex problems
- The provision of simple and affordable solutions to these complex problems
- Mediation of existing policies, so as to best enable their meaningful and sustainable implementation
- The understanding that the most effective way to mediate new practices is to model them consistently
- The knowledge that mediating change requires simultaneous personal and professional development



## Enable officials to support:

1 475 SMT Members

7 326 Teachers

227 000 Learners

In 355 Schools

## Value of support materials:

**R 600 000**

# CTI/MGI Undergraduate Bursary Programme

---

Launched in 2014, in partnership with the Midrand Graduate Institute (MGI) and CTI Education Group, the PMET, MGI / CTI Undergraduate Bursary Programme is available to qualifying grade 12 learners from all SSDP high schools. Offering fully funded tertiary study opportunities for any MGI / CTI undergraduate courses, the bursary also provides placement programmes with access to competitive employment opportunities.

# 10

Bursaries  
per 3 year cycle



Registration



Tuition



Books



Tablet



Living Allowance

Anticipated Value:

# R 4 000 000

# Masters Scholarship Programme

---

The Pearson Marang Education Trust is passionate about making a valued and sustainable contribution towards improving the quality of education in South Africa. The establishment of our Masters Scholarship Programme enabled us to further enrich disadvantaged students' lives. The Programme provided 2 scholarships every 24 months; allowing students to achieve their Masters in Education and in doing so, make a positive impact on the number of postgraduate professionals in 2008 – 2014.

# Support

# 8

graduates from  
disadvantaged  
backgrounds



Registration



Tuition



Research Travel



Living Allowance

Value: 

# R 800 000



---

## Supporting solutions to improve teaching and learning outcomes in under-resourced contexts, within national education policy frameworks

### We take learning personally



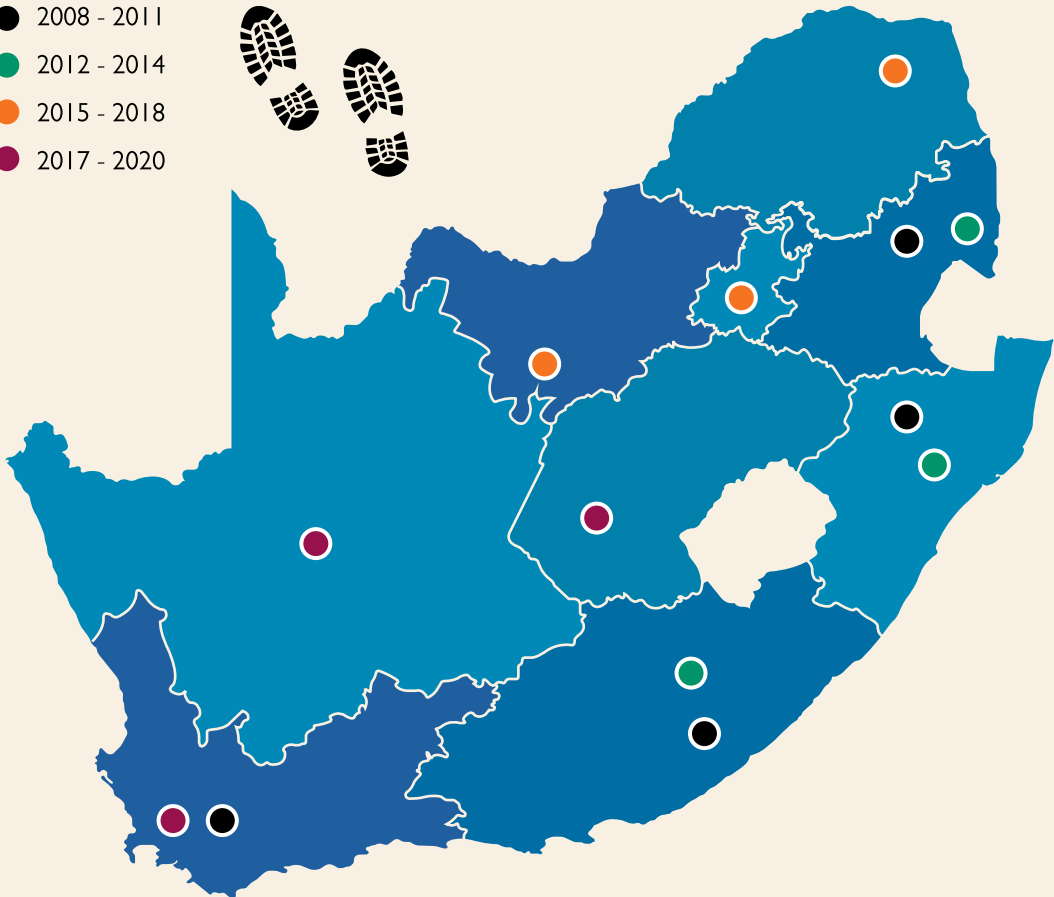
With best practices and solutions in mind, we strive to improve teaching and learning outcomes within challenging, under-resourced and disadvantaged contexts in South Africa. We do this by balancing professional and personal development to provide meaningful, effective and sustainable teacher and learner-centred solutions that can make a difference. Wherever learning flourishes, so do people.

# Project Expansion

---

Currently operating in 8 districts in 7 of South Africa's provinces, we aim to extend our national footprint into all 9 provinces by 2017.

- 2008 - 2011
- 2012 - 2014
- 2015 - 2018
- 2017 - 2020



## Contact us

For more information about the Pearson Marang Education Trust, please contact the Trust Director on: **071 680 4928**, or email: [Veronique.Genniker@Pearson.com](mailto:Veronique.Genniker@Pearson.com)

---

The Trust is registered with the South African Revenue Services as a public benefit organization (PBO no. 930025964) and for income tax purposes (tax reference number 0178/549/16/8).